

SENSIBLE RISK ASSESSMENT

LONE WORKING

SANDRA EDWARDS - Occupational Health Advisor

SILAS SKONKWANI - Student Occupational Health Advisor

BRADFORD EMPLOYEE HEALTH AND WELLBEING UNIT

OBJECTIVES FOR THIS WORKSHOP

- Definition of lone working
- EXISTING LEGISLATION
- Risk assessments for lone workers
- Responsibilities for lone workers
 - The employer
 - The employee
- Play time
- Questions and answers

WHO IS A LONE WORKER?

- HSE defines lone worker as someone who works alone without direct or close supervision E.g.
- mobile workers – sales people
- People working from home
- Employees working away from business base; transport, painting, electricians.
- Self employed people

EXISTING REGULATIONS

- Health and safety at work act 1974 (HASAWA)
- Management of health and safety at work regulations 1999
- Any other regulations specific to the occupation.

Ref; HSE 2009

RISK ASSESSMENT

- Health and Safety risk assessment should cover potential risks and hazards in the business.
- There are potential risks more likely to affect lone workers than any other employees.
- Possible risks include;
 - Medical emergencies
 - Communication
 - Security
 - Isolation
 - Limited knowledge of service user
 - Theft of equipment
 - Vehicle breakdown/accidents
 - Unknown environments/areas

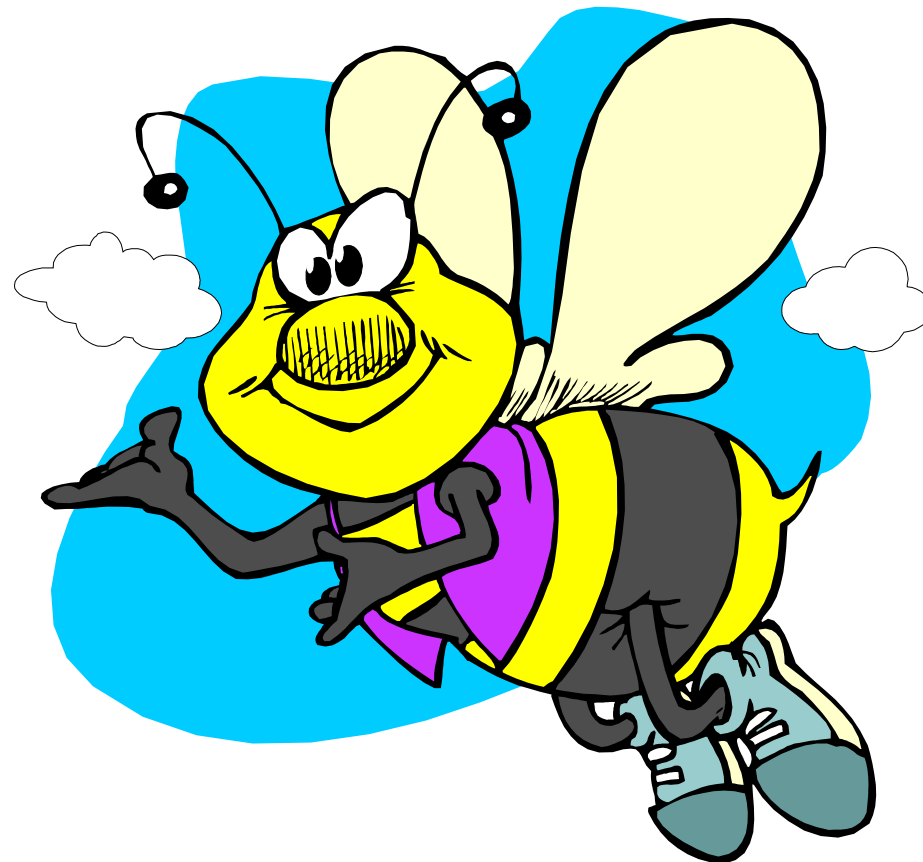
RESPONSIBILITIES OF THE EMPLOYER

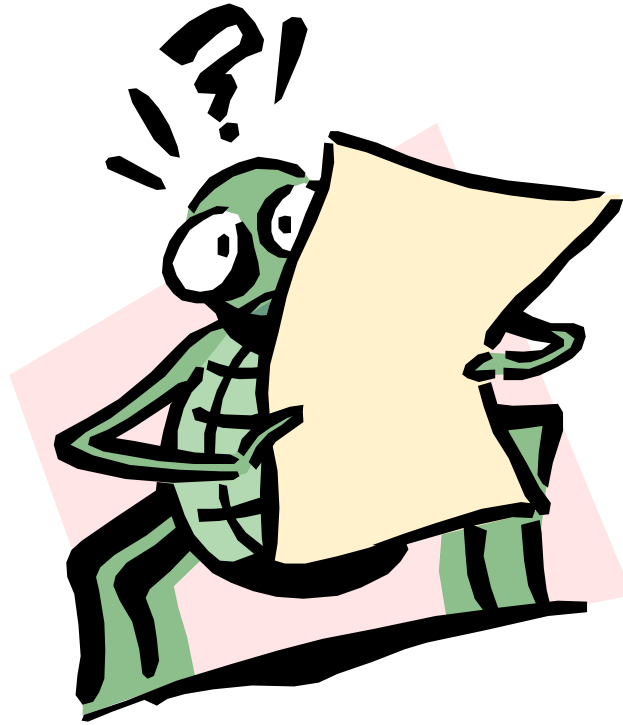
- Medical conditions
- Task Vs risks; can it be carried out by one person
- Supervision
- Contact procedures in emergency situations
- Security
- Check specific legislation in certain professions

RESPONSIBILITIES FOR EMPLOYEES

- Reasonable care to look after own Health and Safety
- Safeguard Health and Safety for others affected by their work
- Co-operate with Health and Safety procedures
- Use equipment properly as directed
- Report incidences, injuries or near misses and other dangerous occurrences

LETS HAVE SOME FUN





QUESTION AND ANSWER SESSION
&
SESSION EVALUATION